





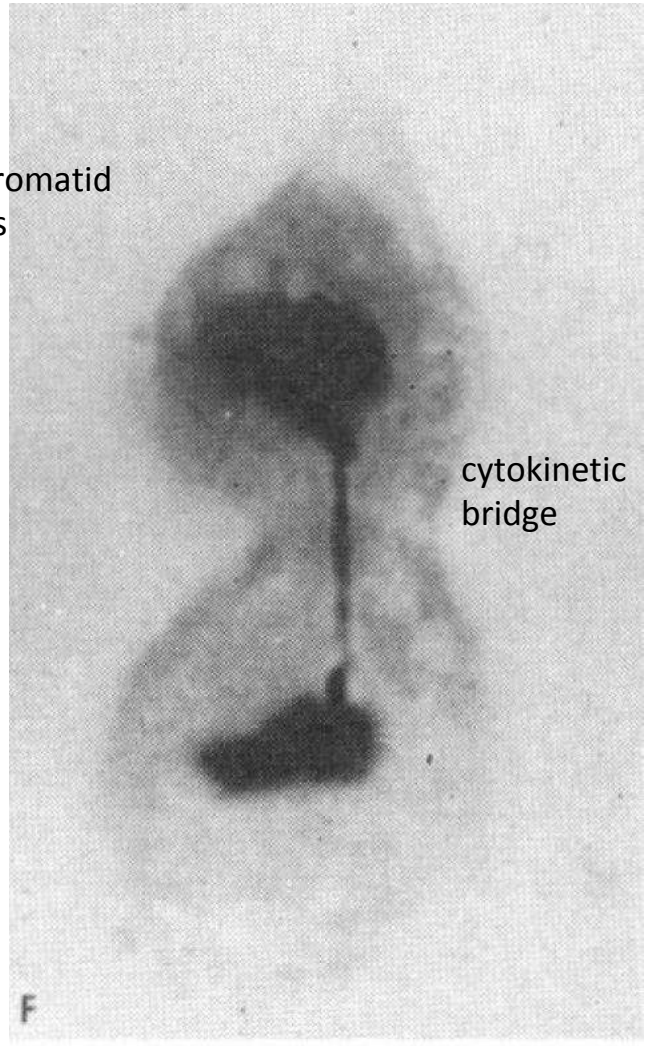
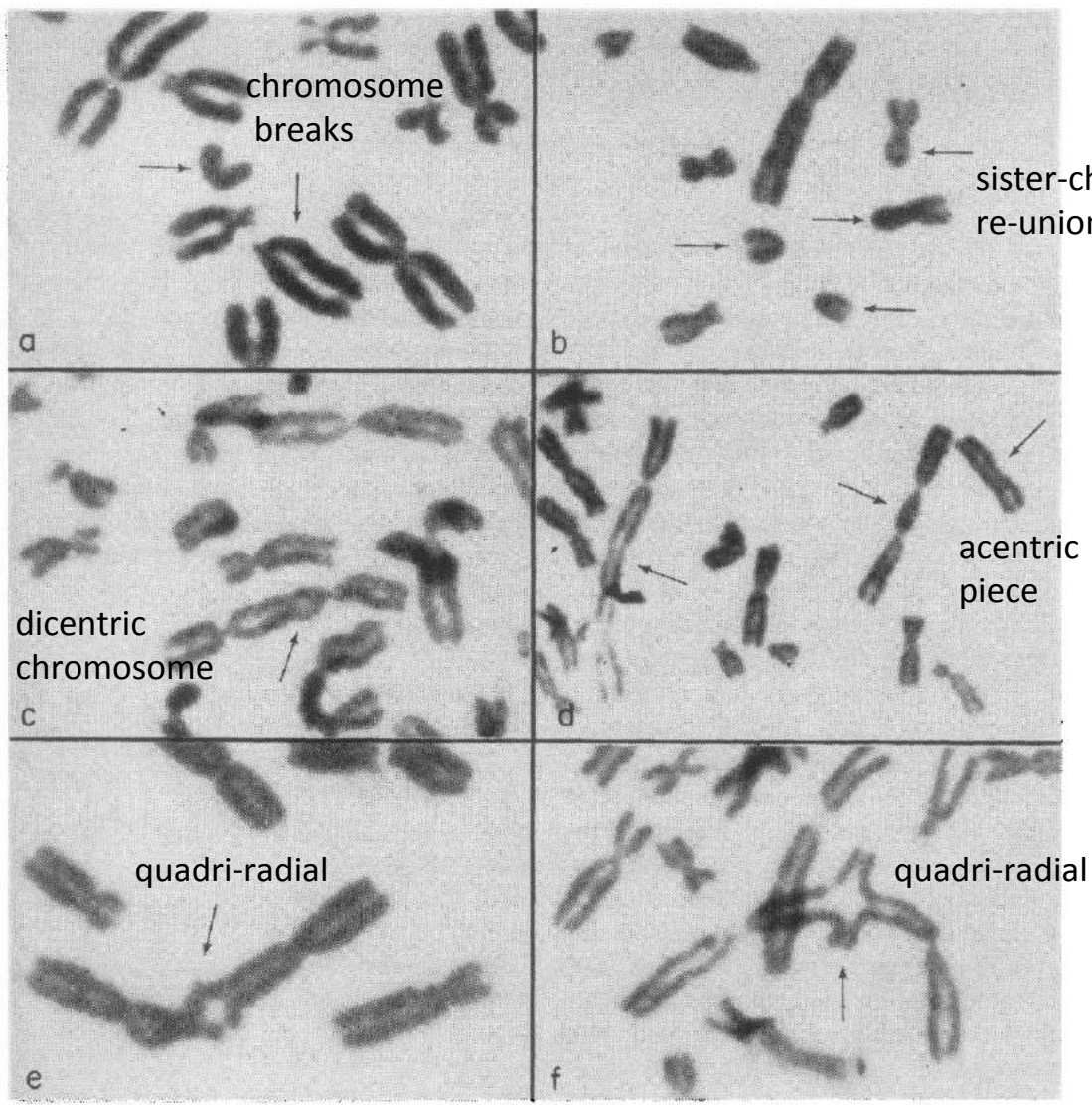




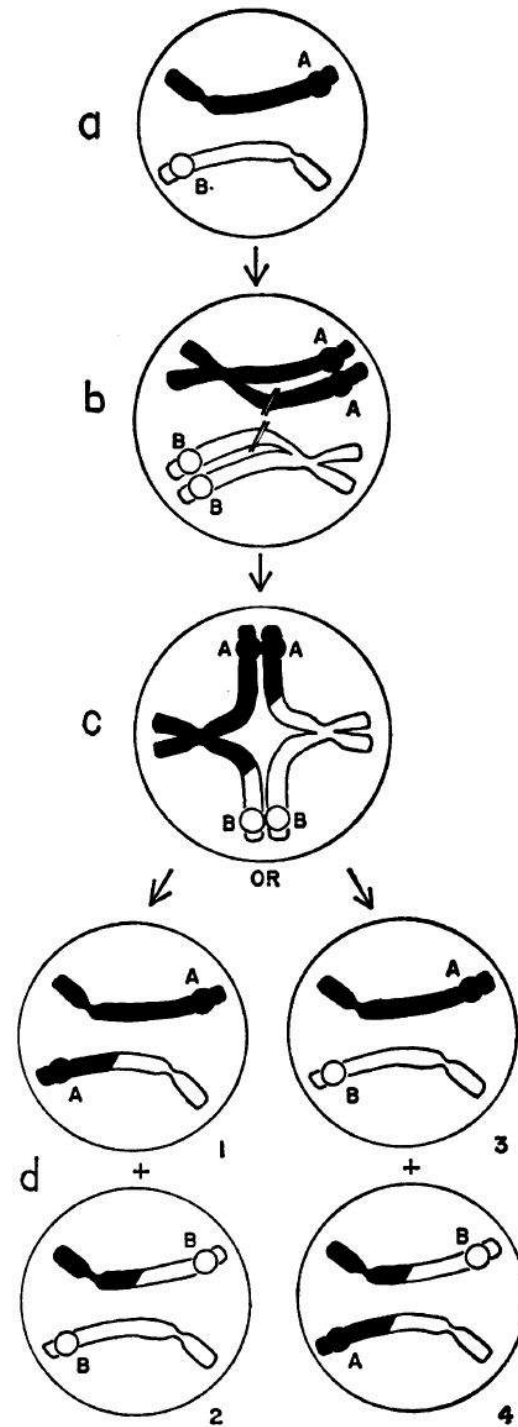
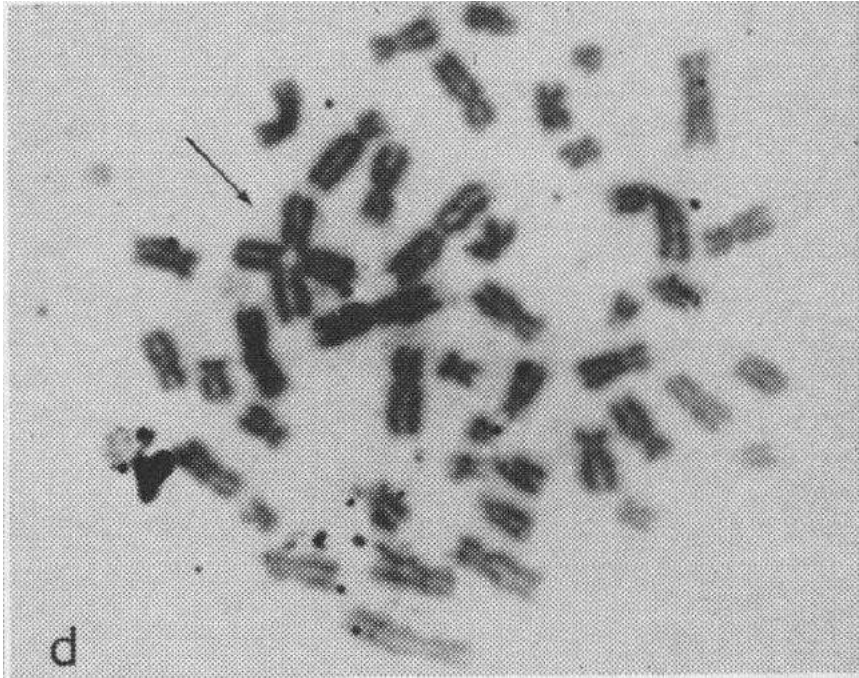
# Some recollections on the contributions of James German



# The menagerie of DNA damage



German et al. Science  
1967



German et al. Science  
1964

# Thanks to the Registry

- Higher frequency of Bloom's in Ashkenazi Jews
- High sister-chromatid exchange in mitotic cells
- Replication defects in DNA synthesis
- Increase mutation rate in somatic cells
- Increased sensitivity to DNA damaging agents – relevant to cancer treatment in BS
- Reduction to homozygosity in cells from blood and in cultured cells (JoG)
- Unequal exchange in repeat sequences in cultured cells (JoG)
- Somatic mosaicism in sister chromatid exchange – key to cloning
- Localization of the BLM gene to chromosome 15
- Somatic intragenic recombination (NAE)
- Cloning BLM gene (NAE/JoG)
- Founder mutations in many different peoples



# At the Germans in Quissett



Standing (left to right): David Lennon; Nathan Ellis; Susan & Nick Ciocci; Becky Alhadeff and Jonathan Miller; James and Sarah Kozlowski; James German. Sitting (right to left), Margaret German, Maria Proytcheva & Brienne Ellis; Mi-Li, Runtao & Tian Ye, Anne Marie Roe.

